



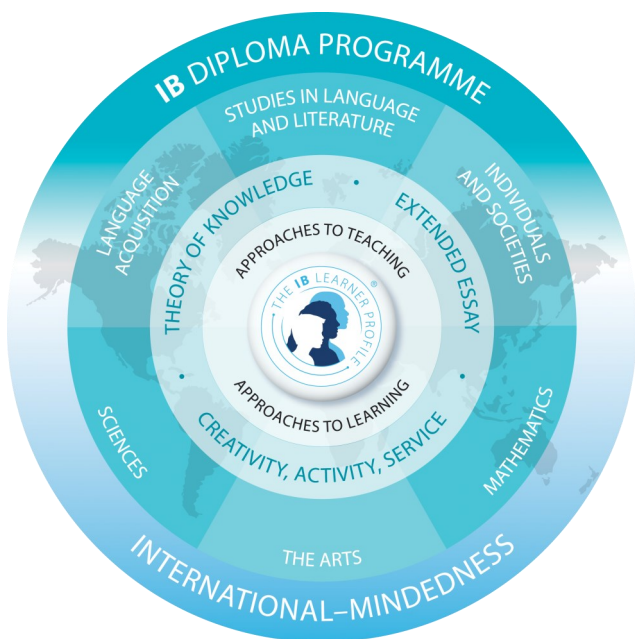
White Rock
Christian Academy

PATHWAYS To Graduation

WRCA and the IB Programme

White Rock Christian Academy exists to inspire and cultivate citizens of Godly character who transform their world for Christ. This core purpose is more than a desire to see our students graduate. We seek to prepare students for life by engaging their minds, their talents, and their hearts.

Our four core programs (Academics, Athletics, Arts, Service) serve as the foundation of the educational curriculum at White Rock Christian Academy. Each faith-based program focuses on an area dedicated to furthering student growth and development while building a holistic education from a biblical Christian worldview. At WRCA, children discover who God is and who they are in Christ, while actively engaging in His creation.



At WRCA, we believe The International Baccalaureate® (IB) program gives our students the best advantage in preparing them for the future. The integrated learning and structured approach provides students with a competitive advantage in that they are better prepared, more confident and have superior time management, organizational and research skills.

The IB Diploma Programme offered at White Rock Christian Academy for Grades 11-12 is a challenging two year pre-university curriculum, leading to a qualification (IB Diploma) that is widely recognized by the world's leading universities. The aim of all IB programmes is to develop internationally minded people who, recognizing their common humanity and shared guardianship of the planet, help to create a better and more peaceful world. At WRCA, we believe well-educated students going through an IB education will be able to demonstrate Godly character while transforming their world for Christ.





Pathways to Graduation

At WRCA, we want all of our students to succeed. By providing Pathways to Graduation, we move from one option, the full IB Diploma Program, to a variety of options.

These options provide flexibility as students assess their career goals and make well-informed course selections to provide the greatest avenue of post-secondary success suited for them.



Pathways: Senior School Options






Pathway	 	
Designation	BC Grad +	IB Diploma Programme Candidate
Description	A widely recognized diploma with high post-secondary acceptance due to IB hybrid teaching, an individualized approach, and a high level of school support	Globally recognized program with high post-secondary acceptance rate with a high level of school support
Post-Secondary Preparedness	<ul style="list-style-type: none"> University and College preparation Global post-secondary aspirations 	<ul style="list-style-type: none"> University and Higher Academia Global post-secondary aspirations
Course Requirements	<ul style="list-style-type: none"> Individualized combination of higher-level IB courses and standard-level IB courses Biblical Studies, CAS and electives More Time Flexibility (i.e. BC Ministry Options) 	<ul style="list-style-type: none"> 3 Higher Level IB Courses 3 Standard Level IB Courses Biblical Studies, Theory of Knowledge (ToK), Extended Essay, CAS and one elective
Students from all pathways have been accepted to:		

Making PATHWAYS Work

White Rock Christian Academy offers a variety of graduation pathways to meet the needs and aspirations of our students. We are committed to working with individual students to find the best pathway to achieve their educational goals, whether it's the full IB programme or a combination of IB and Ministry of BC courses!

Other pathways offer combinations of higher-level and standard-level IB Courses and BC Ministry courses as they work towards their BC Grad+ Diploma, offering a rigorous set of curriculum materials while giving flexibility in electives and study time management.

PATHWAYS EXAMPLES

Category	 	 	
	BC Grad+ Candidate	BC Grad+ Candidate	DP Candidate
Language	Language and Lit SL	Language and Lit SL	Language and Lit HL
Language Acquisition	French Ab Initio	Study Block	French SL
Humanities	History SL	Business Manage. SL	Psychology HL
Sciences	Biology SL	Earth Science 11	Biology HL
Maths	Math Appl. And An. SL	Foundations of Math 11 & 12	Math Appr. and An. SL
Arts	Art SL	Music SL	Chemistry SL
Bible	Bible	Bible	Bible
TOK	No TOK	No TOK	TOK
Elective	PE	CAS Band	Study Block

Notes:

- Biblical Studies and CAS (Creativity, Activity and Service) are core programs of all our pathways to graduation. In addition, the Extended Essay and Theory of Knowledge (TOK) are required for the IB Diploma path.
- For the IB Diploma, 240 hours are required for Higher-Level (HL) courses, and 150 hours are required for Standard-Level (SL) Courses.
- A second science course can be taken instead of an arts course (See example).

If you have any further questions about Pathways, we look forward to speaking with you!

Danielle Zonneveld - Senior School Principal zonneveldd@wrca.ca
 Jeff Weichel - DP Coordinator weichelj@wrca.ca
 Mary Kathryn Perrin - Academic Counsellor perrinm@wrca.ca